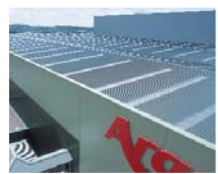




# Daylight Systems

THE COMPLETE RANGE



## trilite marloncs

**In Plane Site Assembled Rooflights**  
Site assembled rooflights, manufactured in both GRP and polycarbonate, are quick and easy to install. All sheets achieve the highest levels of profile accuracy and cover a range of options, including safety levels, U values and fire ratings. Single, double and triple skin rooflights are available for a huge variety of applications from canopies to warehouses and factories to retail and leisure facilities.



## energysaver

**FAIR**  
Factory Assembled Insulating Rooflights manufactured to suit a customer's exact specification. Delivered to site as a complete ready to install unit. A cost-effective rooflight option that can be incorporated into most new or refurbished roofs. Manufactured in both GRP and polycarbonate in formats to suit all of the commonly encountered sandwich panel roof coverings.



## multivault

**Modular Vault Rooflights**  
Comprehensive range of modular length, double skin vault rooflights available in GRP and polycarbonate. Suitable for either flat, pitched or curved roofs. Multivaults are a cost-effective range of vaulted rooflight options that are easily incorporated into new or refurbished roofs.



## marvault hf marvault rl

**Vault Rooflight Systems**  
Continuous run vault rooflights ideal for use on sports halls, assembly halls and over corridors. Marvault HF is a vault rooflight system with a maximum span of 9m and hidden fixings, which can achieve U values as low as 1.6W/m<sup>2</sup>K. Marvault RL barrel vaults provide long term reliability and high quality detailing, with different ventilation options available.



## ritchlight

**Skylights**  
Attractive glazing bar systems, with excellent weather resistance and durability, widely specified where reliability is paramount. With many ventilation and solar control options and double glazed in either glass or polycarbonate, this is the ideal system for large area glazing up to 5m span and any length.



## mardome

**Dome Rooflights**  
A range of modular pyramid and dome rooflights with unique security and water-proofing features. These are reliable, safe, secure and well insulated rooflights. Suits new build or refurbishment projects, replacing just the glazing or the whole unit.



## xlokultra xlokexpress

**Panel Glazing Systems**  
Continuous run rooflights. These versatile interlocking panel glazing systems are ideal for the creation of covered play areas and walkways. Panels are fully factory assembled for fast and simple site installation, without the need for glazing experience. With up to 4 1/2m span between supports, top hung vents and a non-fragile option, this is a highly affordable system.



## marlon fsx

**Solid Polycarbonate Sheet**  
Solid polycarbonate sheet with shatter resistance up to 200 times that of glass, ideal for canopy glazing applications. Marlon FSX Longlife has co-extruded UV protection on both sides to cut out 98% of harmful UV radiation, and offers excellent resistance to weather and atmospheric conditions.



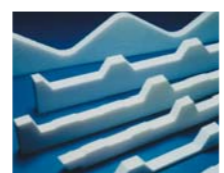
## marlon st

**Multi-wall Polycarbonate Sheet**  
Multi-wall polycarbonate sheet with a shatter resistance up to 200 times that of glass. Available in five structures and nine tints, to provide a range of thermal performance and light transmission options. Co-extruded UV protection cuts out 98% of harmful UV radiation.



## rainwater

**Industrial Rainwater Systems**  
An extensive range of rainwater management systems to suit every designer's needs.



## ACCESSORIES

A comprehensive range of accessories including foam fillers, available in a wide range of options, and tapes, sealants and adhesives, manufactured and sourced from the best in the industry.



# Daylight Systems

# Modular Glass Rooflights



# mardome glass

Enquiries from England, Scotland and Wales:  
**Brett Martin Daylight Systems Ltd**  
TEL: 024 7660 2022  
Email: daylight@brettmartin.com

Enquiries from Ireland:  
**Brett Martin Limited**  
TEL: 028 9084 9999  
Email: mail@brettmartin.com

Brett Martin Daylight Systems operates a policy of continuous product improvement and reserves the right to alter specifications at any time without notice. Every effort has been taken to ensure all details contained in this document are correct at time of going to press but this document should be used only as a guide and does not in any way form part of a contract or warranty. It is the customer's responsibility to ensure that the product is suitable for the actual conditions of use, which are beyond the control of Brett Martin Daylight Systems.



www.daylightsystems.com



# mardome glass

Mardome Glass, the modular glass rooflight from Brett Martin, provides superb aesthetics. Internally the flat panel allows a clear view to the sky above while externally it has a very clean, neat appearance, particularly important if the roof is overlooked from other parts of the building. Glass is more durable than polycarbonate and will look better for longer. Mardome glass will provide better sound insulation, particularly from rain and hailstones than the polycarbonate alternatives.

- Fully thermally broken
- Aesthetically pleasing from inside and out
- Manufactured from toughened glass
- Non fragile when tested to ACR(M)001:2005
- Low U value and solar control glazing options available
- Fixed or opening units available
- Openers either powered or manual
- Security fixings
- Easy to install
- No visible fixings
- Available as a rooflight only option to fix to a builder's upstand

## Natural Daylight

Creates environments people want to spend time in. Rooflights allow in 3 times more light than the same area of vertical glazing. Mardome Glass is ideal for providing natural light into any high specification building particularly homes and residential developments.



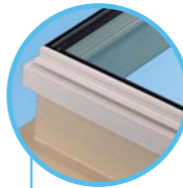
All Mardome glass rooflights are available in both fixed and opening formats

### STANDARD SIZES

1250mm x 1250mm  
1000mm x 1000mm  
750mm x 750mm

### Smooth Appearance

The aluminium top frame and PVC sub frame conceal all fixings creating a smooth, clean appearance.

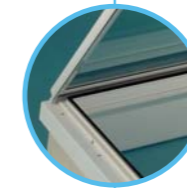


### Energy Efficient

A number of glazing options are available. Argon filled option provides a U value of 1.7 W/m<sup>2</sup>k.

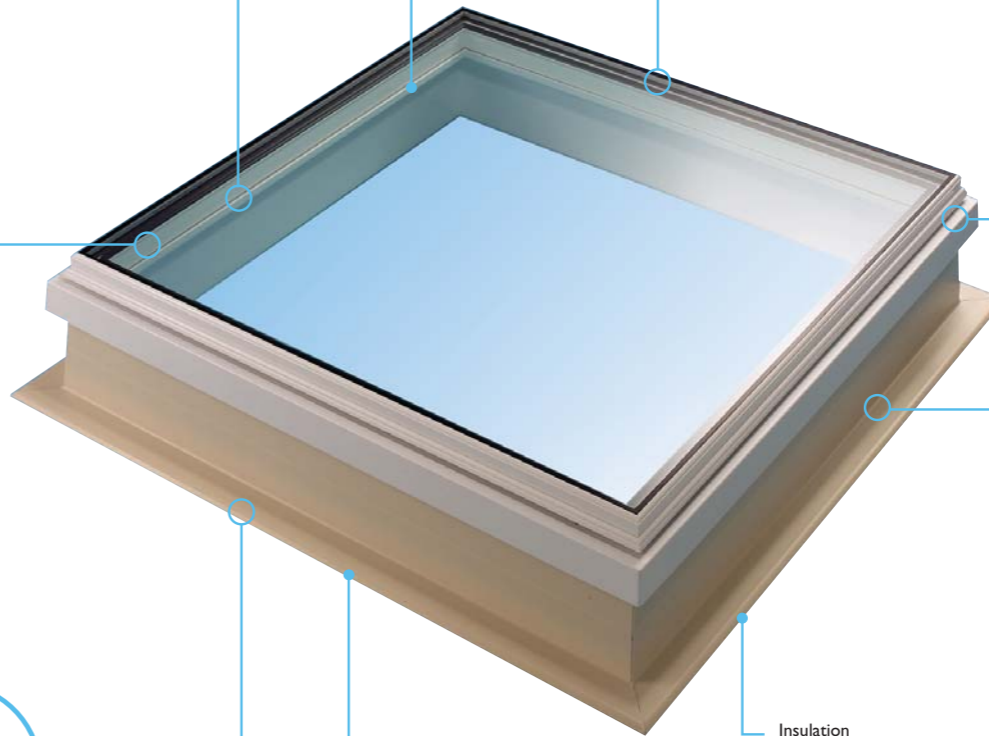
### Unique Hinging System

Unique hinging system simplifies installation and allows any Mardome Glass rooflight to be supplied either as a fixed or as an opening unit.



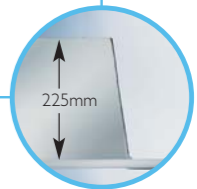
### Flat Glazing

The flat, double glazed glass panel creates very clean aesthetics both internally and externally.



### Tall Kerb Simplifies Installation

A kerb height of 225mm allows the designer to determine the most appropriate way of fixing the rooflight to the roof structure.



### Horizontal Membrane Termination

The roofing membrane, when brought over the top edge of the kerb, is secured by the rooflight frame and security fixings, making water ingress virtually impossible.



### Rooflight Only

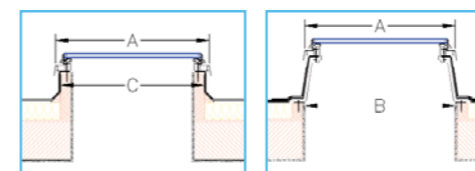
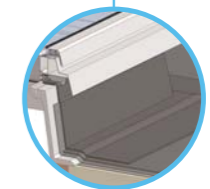
Available as a glazing unit only to fix to a builder's upstand.

### Insulation

The combination of a cellular PVC kerb with matching standard glazing guarantees optimum insulation.

### Designed for Security

All fixings are concealed and security fixings are used, helping to deter intruders.



### Kerb Options

Where a non-standard roof opening exists, kerb adaptors can be specified to provide an exact fit onto the prepared builder's upstand.

### Kerb Dimensions

BUILDERS KERB (C) EXTERNAL	MARDOME GLASS (A)	ROOF APERTURE (B) WITH MARDOME UPSTAND
700mm x 700mm	750mm x 750mm	750mm x 750mm
950mm x 950mm	1000mm x 1000mm	1000mm x 1000mm
1200mm x 1200mm	1250mm x 1250mm	1250mm x 1250mm

